

TREE

BLUETOP

solar parking

Bluetop TREE Solar Carports

This is a range of standardised carport designs. The innovative structures are the basis for SOLAR PARKING - long lasting low carbon of your parking area. The structures are being supplied as complete kits and solutions for all common PV-modules.

Innovative Product

Innovative designs make solar parking affordable and attractive.

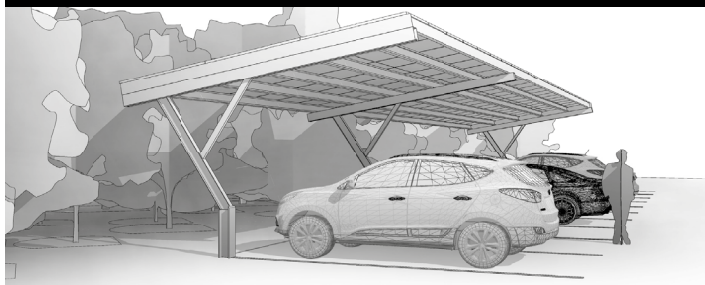
Installation

Easy and fast installation with a light-weight construction.

Materials

Zinc-magnesium in accordance to DIN 55928-8
PV-mounting system: stainless steel or aluminium.

TREE-1



10 degrees inclination

[LEARN MORE](#)

TREE-2



10 degrees inclination

[LEARN MORE](#)

Long span up to 7,5 meters - provides uninterrupted access.

Endless PV-roof - optimised PV area and flexible placement of posts.