

YPSILON

BLUETOP

solar parking

Bluetop YPSILON Solar Carports

This range of standardised carports create a long lasting green utilisation of your parking area. The structures are supplied as complete kits and solutions which can be integrated with all common PV-panels, including transparent glass-glass.

Innovative Product

Innovative designs make solar parking affordable and attractive.

Installation

Easy and fast installation with a light-weight construction.

Materials

Zinc-magnesium in accordance to DIN 55928-8
PV-mounting system: stainless steel or aluminium.

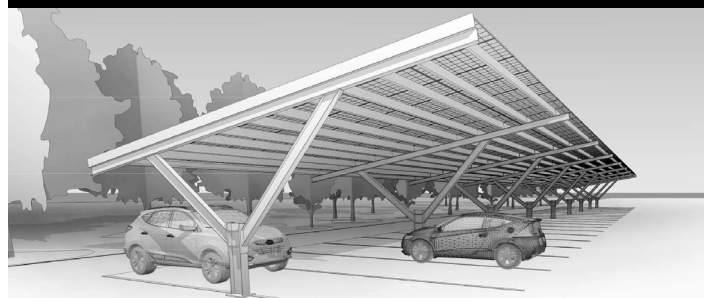
YPSILON-1



10 degrees inclination

[LEARN MORE](#)

YPSILON-2



10 degrees inclination

[LEARN MORE](#)

Long span up to 7,5 meters - provides uninterrupted access.

Endless PV-roof - optimised PV area and flexible placement of posts.

